

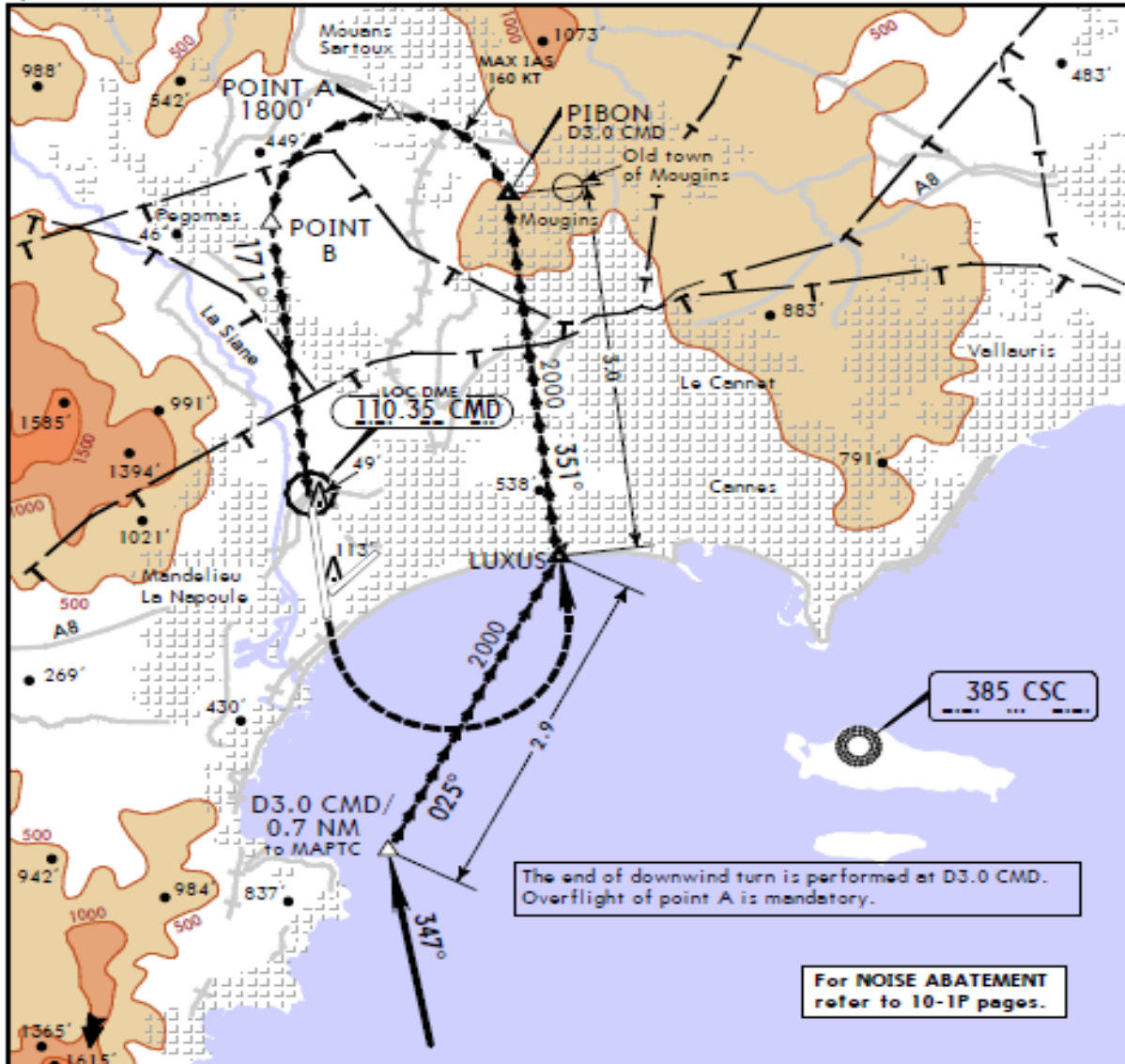
LFMD/CEQ

JEPPESEN
 25 MAR 16 **19-10** Eff 31 Mar

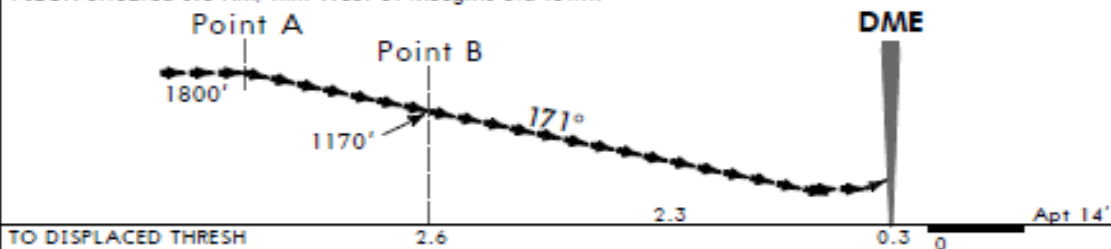
CANNES, FRANCE
 MANDELIEU
 VPT A Rwy 17

Apt Elev **14'**

VISUAL MANOEUVRING WITH PRESCRIBED TRACKS



PIBON situated 0.5 NM/1km West of Mougins old town.



MISSED LANDING: Turn LEFT to rejoin down wind leg climbing to 1500'.

Standard

	Max Kts	DAY		NIGHT
		After RNAV (GNSS) A approach MDA(H)	After LOC A approach MDA(H)	
A	110	2000' (1986')	3200m	NOT AUTHORIZED
B	135	2000' (1986')	5000m	
C	180	2000' (1986')	5000m	
D		NOT APPLICABLE		

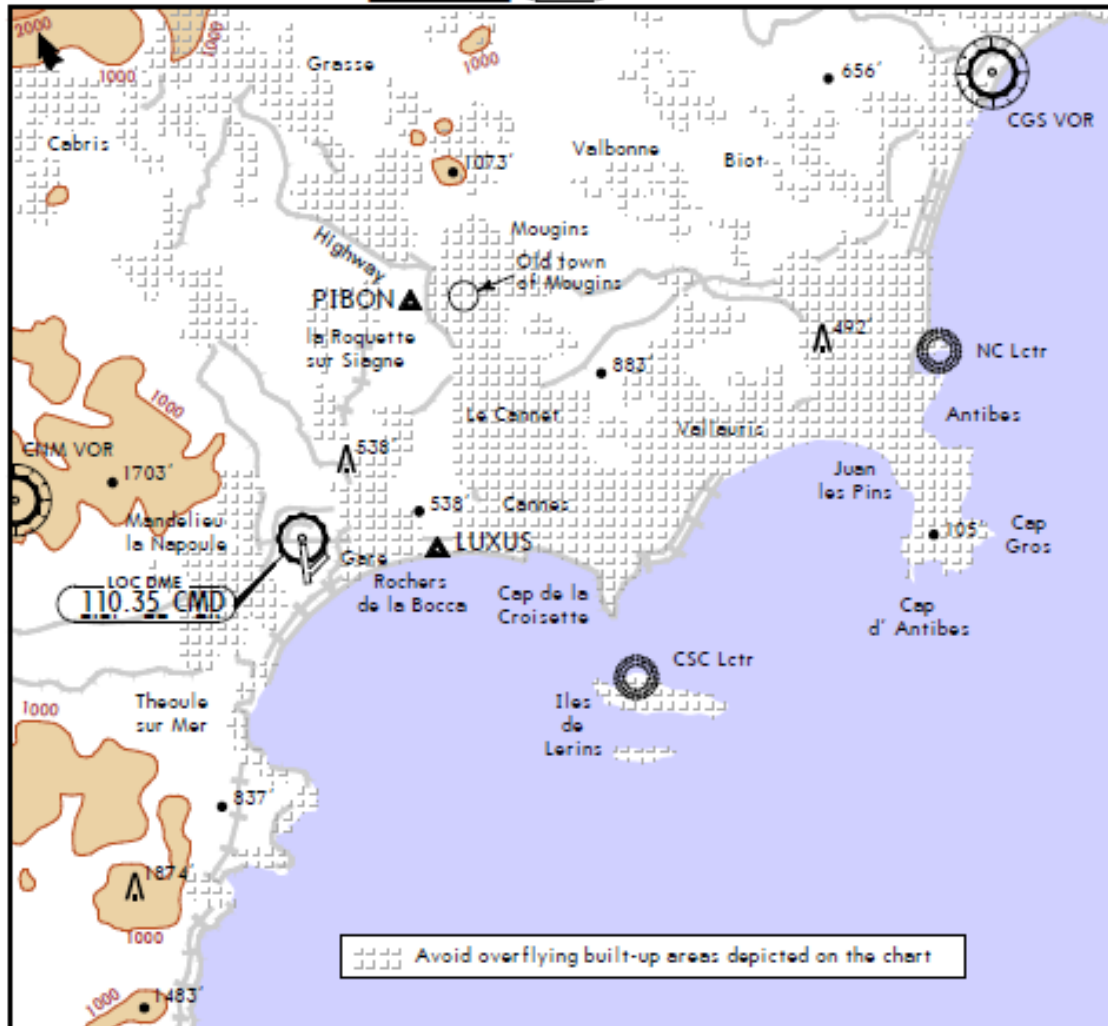
CHANGES: Altitudes. Minimums.

© JEPPESEN, 2003, 2016. ALL RIGHTS RESERVED.

LFMD/CEQ
MANDELIEU

JEPPESEN
25 MAR 16
Eff 31 Mar 19-11

CANNES, FRANCE
ENVIRONMENT-VISUAL APPROACH



Visual Approach clearance required

Instructions, except for safety requirement

Visual approach clearances are given only from a position over the sea. When the pilot receives clearance to fly a visual approach, he shall proceed as follows, except if otherwise directed:

- MAX 160 KT or minimum speed in clean configuration.
- Maintain 2000' over the sea then:

- For RWY 17

Go round "Iles de Lerins" by South and West.
Join LUXUS (0.3 NM/0.5 km East of "Rochers de la Bocca").
Join PIBON (0.5 NM/1 km West of old town of Mougins) maintain 2000' and avoid overflying of depicted built-up areas.
Keep clean configuration until PIBON.
Start descent after PIBON.
Flying over A (roundabout of the penetrating Cannes - Grasse) is mandatory.
Do not fly beyond the Cannes-Grasse highway.

- For RWY 35

Proceed to the final approach for rwy 35.

Visual approach weather conditions

- For multi-engine acft and during day time:
Visual approach clearances may only be issued when weather conditions notified by CANNES Tower are as follows:
 - horizontal visibility equal to or more than 5 km and
 - cloud base equal to or above 2500'/750m.
 Visual approaches should not be authorized when NICE Approach is not informed of the weather conditions. Especially out of CANNES ATS hours visual approaches are prohibited.
- For all acft and during night time:
Only rwy 35 is available for night landings at CANNES airport.
Visual approach clearances may only be issued when weather conditions notified by CANNES Tower are as follows:
 - horizontal visibility equal to or more than 5 km and
 - cloud base equal to or above 3500'/1050m.